



**musola**

SAVAGE DOSSIER

2018

OUT  
DOOR  
FEELING

**musola**, is our new outdoor concept, developed following our guidelines for design and quality. The product development combined with the specialized production results in a highly qualified product.

Made in Spain



# CANASTA

Design  
Yonoh Studio  
2018, Valencia

musola

## Chair with cushion

A product designed to give maximum comfort and functionality.

Canasta is a multipurpose chair for interior and exterior use. Made from steel bars, forming the squares that generates the perfect ergonomically perfect seat shell. The chair has pyramid shaped legs attached to the shell with specially designed fittings. In addition the Canasta chair offers the option of adding a seat cushion or alternatively a fully upholstered seat shell.

The upholstery of the Canasta chair follows the shape of the shell structure like a skin, adding elegance and sensuality to the product.



Chair  
with cover

## NANSA



From this intrinsically Mediterranean concept, flexible and informal, the message includes the imagination of our sunsets, the colour of our parties, the lightness of the environment and the good weather.

The thread going through the collection is the shape of the basket itself. Set with the purpose of attracting the user, a fleeting sit on a comfortable seat and providing visual lightness to the entire collection. Compositions at peace evoking moments of spring and warm summers.

Upholstery cover wraps the structure, evoking the tenderness from a special moment.

Design  
Santiago Sevillano  
2018, Valencia

# Nansa

## Armchair

Armchair, made entirely of stainless steel. Removable seat with water-permeable polyurethane foam (Dry Feel) and polyester fibre inside.



# Nansa

## Sofa 2

Two seater sofa, made entirely of stainless steel. Removable seat with water-permeable polyurethane foam (Dry Feel) and polyester fibre inside.

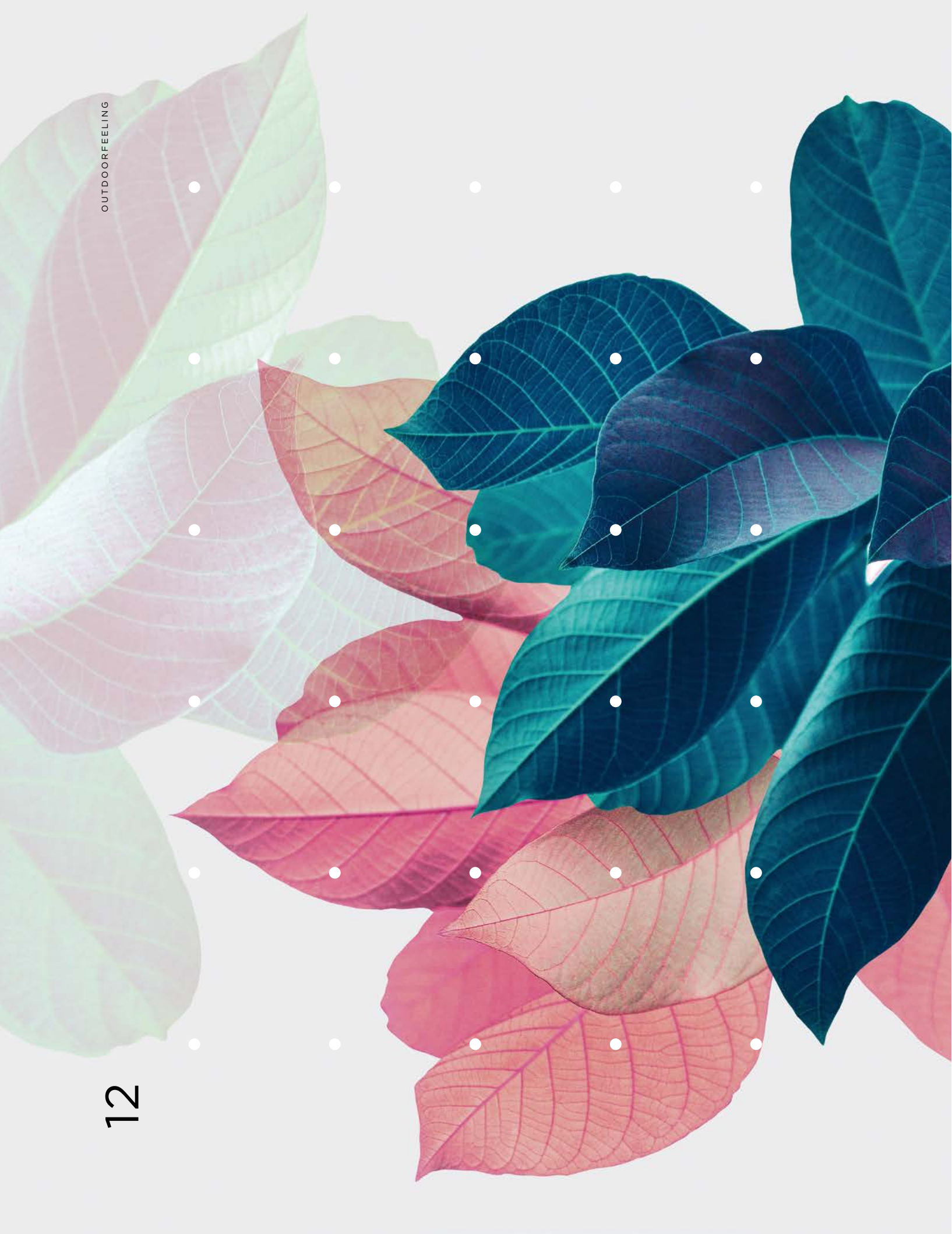


# Nansa

## Sofa 3

Three seater sofa, made entirely of stainless steel. Removable seat with water-permeable polyurethane foam (Dry Feel) and polyester fibre inside.





**musola**

## Nansa

### Chair

Chair with its frame made entirely of aluminium, it has a high lightness. Its seat is removable with waterpermeable polyurethane foam (Dry Feel) and polyester fibre inside. Stackable up to four chairs.





# Nansa

Coffe table

Collection of coffee tables with aluminium structure. It is available in different sizes and forms. Table top made of ceramic laminated with glass.



### The Outdoor table

Fixed or Extending table. All metallic elements of its structure are made of stainless steel. Table top made of ceramic laminated with glass.



#### Fixed

Sizes  
Length , 90 to 350  
Width, 80 to 125



#### Extending

Sizes  
Length, 90/130 to 240/300  
Width, 80 to 110



# Salvia

Coffe table



Coffee table (height 40). Its structure and also the metallic elements which form it have been made of stainless steel. Table top made of ceramic laminated with glass.

## Table

# ICE

Central column table available in six different heights (H33 / H40 / H55 / H75 / H90 / H110). All metallic elements of its structure are made of stainless steel.  
Table top made of ceramic laminated with glass.  
Base (45x45, 53x53 and 60x40) with adjuster rubber cap.



## Table

# LEMON

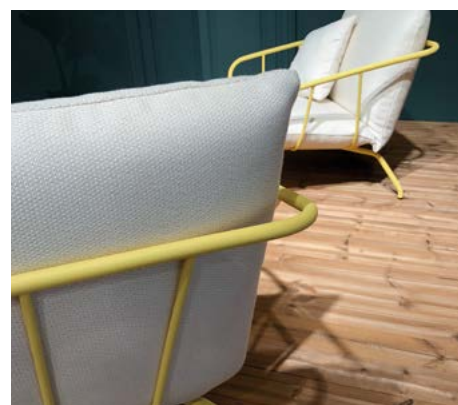
Central column table available in six different heights (H33 / H40 / H55 / H75 / H90 / H110). All metallic elements of its structure are made of stainless steel.  
Table top made of ceramic laminated with glass.  
Base (Ø45, Ø50 and Ø65) with adjuster rubber cap.



# Paris

## Espritmeuble, 2017

Presentation of the MUSOLA brand in the Paris fair, Espritmeuble 2017. The full collection was presented and received a great acceptance from our customers and the general public



## Metals



The company's constant research in the emerging technologies and materials is crucial to create a high quality outdoor product that is able to withstand adverse weather conditions. This research has led us to use two types of metals for all Musola products:

### 1. STAINLESS STEEL (304 alloy):

Stainless steel is a steel alloy with a minimum of 10.5% chromium content by mass. Stainless steels contain sufficient chromium to undergo passivation, spontaneously forming a microscopically thin inert surface film of chromium oxide. This passive film prevents further corrosion. This alloy contains 18% chromium and 8% nickel. The stainless steel alloys 304 are a part of the austenitic stainless steels. Its excellent properties make them ideal for outdoor use.

### 2. ALUMINIUM (6063 alloy):

Aluminium is a malleable metal, flexible and highly light. The combination of its resistance to corrosion and its lightness becomes it in a perfect material for outdoor use.

This grade is commonly referred to as the architectural alloy. It was developed as an extrusion alloy with relatively high tensile properties, excellent finishing characteristics and a high degree of resistance to corrosion.

## Ceramics



The TECH CERAMIC, COOL CERAMIC and AVANT-GARDE CERAMIC collections presents innovative high-quality product, comprised of two laminated parts; the glass base and the porcelain surface. All offering unique technical properties: resistant to high temperatures; resistant to chemical products; resistant to wear, scratching and abrasion; hygienic and stainresistant surface; waterproof and resistant to liquids. In addition, they are environmentally friendly.

# Fabrics



The Upholstery Fabrics collection is inspired by the founding values of the Sunbrella brand: design and performance. The collection comes in a rich array of colors, patterns and textures. From beautiful basics to sophisticated jacquards, each fabric was developed to reflect a unique identity. Sunbrella Upholstery fabrics are as versatile indoors as out due to the following properties:

**1 - Colored to the core.**

Sunbrella fibers are steeped in top quality dyes during the actual manufacturing process, when the acrylic is still liquid. As a result, Sunbrella yarn is colored all the way to the core so its original vibrancy lasts on and on.

**2 - Repels liquids and dirty.**

Sunbrella fabrics are treated with a proprietary water and stain repellent finish that is designed to last for several years.

**3 - Easy to clean, even using bleach.**

You can remove all kind of stains like Ketchup, Chocolate, pen ink, oil, soya, wine... even gum; without fading.

**4 - Smooth, warm and comfortable.**

**5 - No loss of color.**

With long-lasting color-fastness and UV protection, Sunbrella fabrics are engineered to withstand the sun.

**6 - Machine wash in cold water on the delicate cycle with normal amounts of mild laundry detergent.**

**7 - Breathable.**

Sunbrella fabrics give a perfect balance between breathable and water and stain repellent.

**8 - Mold and Mildew resistant.**

All Sunbrella fabrics are engineered to resist mold and mildew.

**9 - UV and Fade resistant.**

Sunbrella fibers are saturated to the core with highly UV-stable pigments, making Sunbrella fabrics resistant to fading and the degrading effects of sunlight.

**10 - Sunbrella is the only indoor/outdoor brand present on all continents.**

For more than fifty years, Sunbrella fabrics have been leading the way for the entire technical textiles industry with ongoing innovations. Buyers all across the globe recognize their qualities.

**11 - Soft, welcoming fabrics.**



Water and Stain repellent



Bleach cleanable



Breathable comfort



Sun protection



Mold and Mildew resistant



UV and Fade resistant

EMAIL

[info@musola.es](mailto:info@musola.es)

WEBSITE

[www.musola.es](http://www.musola.es)

SOCIAL



[@musola\\_outdoor](https://www.instagram.com/musola_outdoor)



[@Musola.Outdoor](https://www.facebook.com/Musola.Outdoor)





OUT  
DOOR  
FEELING

[musola.es](http://musola.es)